

機型 (Model no.)	ZHC-45TPS	ZHC-75TPS	ZHC-100TPS	ZHC-130TPS	ZHC-160TPS	ZHC-200TPS	ZHC-250TPS	ZHC-400TPS
鎖模力 Clamping force	45 Ton	75 Ton	100 Ton	130 Ton	160 Ton	200 Ton	250 Ton	400 Ton
柱直徑 Tie bar diameter	ø60	ø65	ø70	ø80	ø90	ø100	ø110	ø125
柱內尺寸 Tie bar distance	310 x 310	335 x 335	385 x 385	420 x 420	460 x 460	500 x 500	560 x 560	620 x 620
開模行程 Die open stroke	190	250	280	300	330	370	400	450
夾模厚度 Die height distance	120~340	120~400	130~450	180~480	180~500	180~520	220~600	280~700
押出力 Ejection force	2.6 Ton	3.9 Ton	3.9 Ton	6.7 Ton	6.7 Ton	7.6 Ton	9.4 Ton	11.3 Ton
押出行程 Ejection stroke	65	70	80	90	90	90	90	120
頂緊力 Nozzle touch force	2.1 Ton	2.1 Ton	2.1 Ton	3.4 Ton	3.4 Ton	4.3 Ton	4.3 Ton	5.3 Ton
頂緊行程 Nozzle touch stroke	175	190	210	230	230	250	250	280
最大射出力 Max. shot force	4.1 Ton	5.2 Ton	6.7 Ton	6.7 Ton	8.1 Ton	9.7 Ton	11.5 Ton	13.4 Ton
射出行程 Shot stroke	165	165	165	175	175	200	200	200
料管直徑 Shot sleeve diameter	ø45~ø50	ø50~ø55	ø55~ø60	ø60~ø65	ø65~ø70	ø70~ø75	ø75~ø80	ø80~ø85
射出口位置 Shot position	0°-55°	0°-55°	0°-80°	0°-80°	0°-80°	0°-100°	0°-125°	0°-175°
鑄造壓力 Casting pressure	257 Kg/cm ²	269 Kg/cm ²	282 Kg/cm ²	234 Kg/cm ²	244 Kg/cm ²	252 Kg/cm ²	260 Kg/cm ²	266 Kg/cm ²
射出重量 Shot weight	1863~2300g	2300~2780g	2781~3310g	3560~4122g	4122~4781g	5464~6273g	6273~7137g	7137~8057g
射出速度 Shot speed	0.1~1.2 m/s	0.1~1.2 m/s	0.1~1.2 m/s	0.1~1.2 m/s	0.1~1.2 m/s	0.1~1.2 m/s	0.1~1.2 m/s	0.1~1.2 m/s
油泵馬力 Pump horsepower	10 HP x 6 P	15 HP x 6 P	15 HP x 6 P	25 HP x 6 P	25 HP x 6 P	30 HP x 6 P	30 HP x 6 P	40 HP x 6 P
機械重量 Machine weight	4000 Kg	7500 Kg	8000 Kg	8500 Kg	9000 Kg	10000 Kg	12000 Kg	19000 Kg
坩堝容量 Crucible capacity	350 Kg	470 Kg	470 Kg	470 Kg	550 Kg	550 Kg	650 Kg	850 Kg
其他 Others								



鋁台精機股份有限公司 (台灣廠)
ZITAI Precision Machinery CO.,LTD.

429 台中市神岡區新庄里溪頭路 172 號
NO. 172, SHI TOU RD., SHEN KANG DISTRICT, 429,
TAICHUNG, TAIWAN.
TEL: 886-4-2561 1858 (10 Lines.)
FAX: 886-4-2561 1862 • 2562 0715
URL: <https://www.zitai.com> E-mail: zitai@zitai.com

寧波鋁台精機有限公司 (寧波廠)
Ningbo ZITAI Precision Machinery CO.,LTD.

中國浙江省寧波市北侖區明州西路 558 號
NO.558 Mingzhou W. Road, Beilun, Ningbo,
Zhejiang Province, China
Tel: 86-574-86805888 Fax: 86-574-86805860
E-mail: nbzitai@zitai.com

全球代理商 Global Agents

巴西 BRAZIL- A.L. PARRA - EQUIPAMENTOS INDUSTRIAIS - ME.
Rua Piaui, 17-Jardim Brasil
CEP 18540-000 - PORTO FELIZ - SP
Tel./Fax: (15) 3262.5027
Celulares : 15-99129.1516 (VIVO),
15-99155.0612 (CLARO), 15-98128.0288 (TIM)
E-mail: alp@superig.com.br
E-mail: alp@alpequipamentos.com
<http://www.alpequipamentos.com>

俄羅斯 RUSSIA- CYBERTECH TAIWAN Inc.
18F, NO.460, Hsin Yi Rd., Sec.4 Taipei
Tel: 886-2-2729-7890 Fax: 886-2-2720-1818
E-mail: machines@cybertech.com.tw

土耳其 TURKEY- GENERAL MAKINA
Ikitelli OSB. Metal Is San. Sit. 16 Blok No.1
Basaksehir / Istanbul / Turkiye
Tel: 90-212 671 97 18-19
Fax: 90-212 671 97 27
GSM: +90 532 435 27 84
E-mail: levent@generalmakina.com.tr
<http://www.generalmakina.com.tr>

印度 INDIA-M/s. TVENKA TECHNOLOGIES
6,Spartan Avenue ,Mogappair East, Chennai - 600
037.
Attn: Mrs. Usha Venkat
Cell-Phone:919840940913
E-mail: info@tvenka.com; mtm@tvenka.com;

哥倫比亞 COLUMBIA- IMOCOM S.A.
CALLE 17 # NO. 50-24 BOGOTA COLOMBIA
Tel:57-1-2623800 Fax:57-1-2624982
E-mail: ochavarro@imocom.com.co

阿根廷 ARGENTINA- N. DAVONIS E HIJOS S.A.
CALLE 74 (DIEGO POMBO) N° 4346
(B1650MED) SAN MARTIN-BUENOS
AIRES-ARGENTINA
Tel:(00-54-11)4752-6636 Fax:(00-54-11)4753-9577
E-mail: davonis@davonis.com

巴基斯坦 SESIRPRETNE NASIAT-NATSIKAP
SUITE NO. 205, 2ND FLOOR, SUM SUM PRIME
PLOT NO. 190, BLOCK 7/8 DHORAJI, C.P. BERAR CO-OPERATIVE
HOUSING SOCIETY, KARACHI-75350, PAKISTAN
CONTACT PERSON: MUHAMMAD ALTAF TAI
TEL NO.: 0092-21-34127677
CELL NO.0092-347-2022223
WHATS APP: 0092-347-2022223
E-Mail: altaftai62@hotmail.com; daniyalta2000@gmail.com

泰國 THAILAND- IRD ENGINEERING CO., LTD.
33/11 MOO 10 , RATCHAPHRUEK ROAD ,
CHIMPLEE, TALINGCHAN , BANGKOK 10170
THAILAND.
Tel:662 8862381 FAX:662 8892385
E-mail: irde@truemail.co.th

墨西哥 MEXICO- FERZIJ, S.A. de C.V.
ERASMO CASTELLANOS QUINTO NO. 351; DEL
COYOACAN, COL. EDUCACION CP044000;
MEXICO, D.F., MEXICO
Tel:(52-55) 5549-6278 Fax:(52-55) 5549-0750
E-mail: ventas@ferzij.com; ferzij.sadecv@gmail.com
<https://www.ferzij.com.mx>

美國 USA Mr. Richard Jaffe
1231 Hilary lane Highland Park, IL 60035
Tel: 847 441-8500 Fax: 847 441-8540
Cell phone: 847 312-0239
E-mail: rjaffe@diecastequipmentgroup.com

智利 CHILE- RAUL CARNERO Y CIA. LTDA.
MARTINEZ DE ROZAS 4533 SANTIAGO-CHILE
Tel:56-2-7723092 Fax:56-2-7862021
E-mail: carnero.raul@gmail.com

大陸地區服務處 Service Office in China

寧波鋁台精機有限公司 (上海辦事處)
Shanghai Office of Ningbo ZITAI Precision
Machinery CO., LTD

寧波鋁台精機有限公司 (廣東辦事處)
Dongguan Office of Ningbo ZITAI Precision
Machinery CO., LTD



Hot Chamber Die Casting Machine

熱室壓鑄機



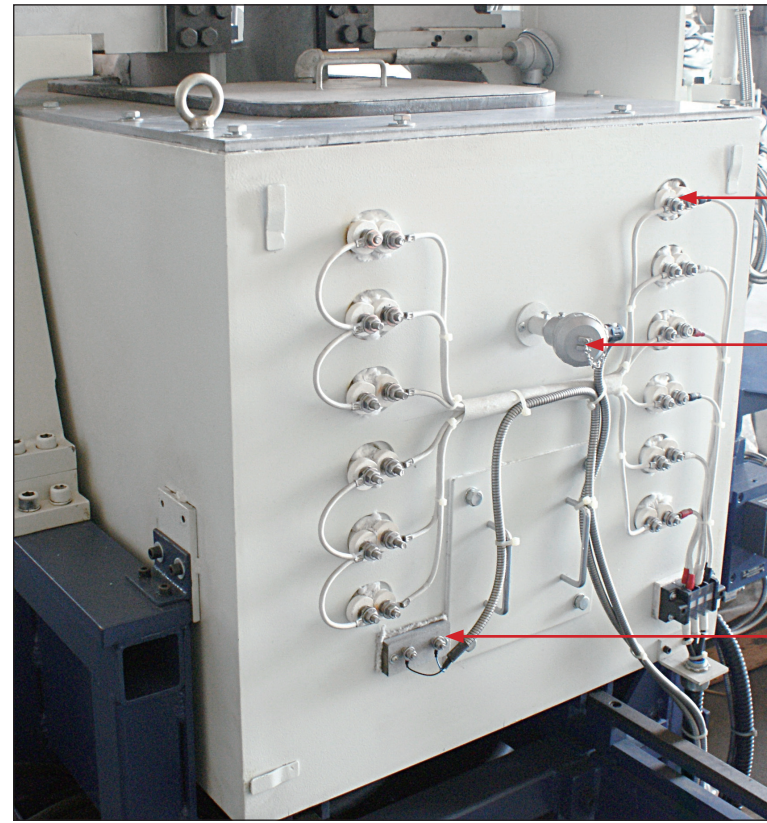
High efficiency, Excellent Performance,
Technological Advancement...

高效率、高品質技術的提升！



鋁台精機股份有限公司
ZITAI PRECISION MACHINERY CO.,LTD.

產品優異特性說明 Outstanding Features



可抽換式電熱棒
Replaceable Heaters

爐腔溫度感測棒
Temperature Sensor Rod

漏料警報
Leakage Alarm

電爐 ELECTRIC FURNACE AND NOZZLE

高效能電爐，鋅湯穩定，降低不良率穩定生產、保護環境。

All models have standard electric furnace and nozzle heaters to provide the highest technology that is more efficient and prevents temperature fluctuations found on gas fired furnaces. The result is lower rejects and stable casting conditions while protecting the environment.



升降機構 MULTIPLE-POSITION MECHANISM

射出中心升降位置更換容易，減少作業時間。

Change shot position from center to below center easily to reduce die changing time.

產品優異特性說明 Outstanding Features



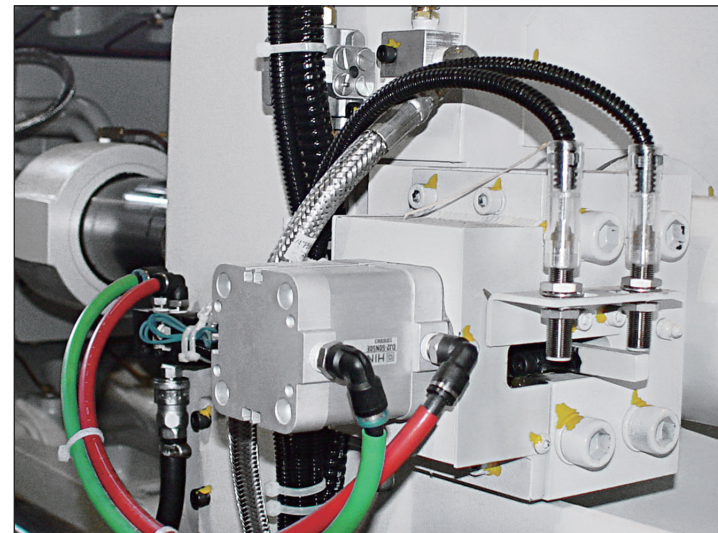
鎖模力環規 STRAIN GAUGE

避免鎖模力不足時，產生噴模的工安問題。
Strain gauges provide accurate clamping force to avoid flashing molten zinc and improve safety.



無給油襯套 OIL-FREE BUSH

高強度、高耐磨性之無給油襯套。
Equipped with high durability and wear-resistance oil-free bush.



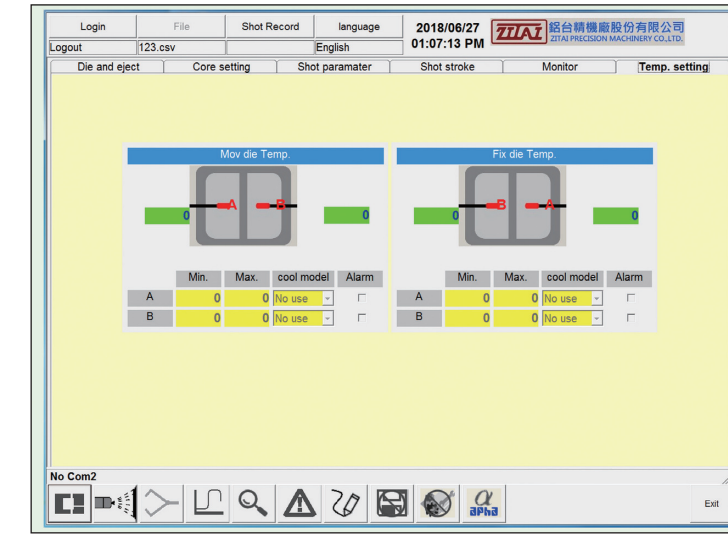
安全梢 RATCHET SAFETY DEVICE

提供ANSI B152.1安規標準、確保操作安全。
All machines are equipped with a ratchet safety device as part of the requirements of ANSI B152.1 safety standard. Interlocked machine guarding and other control interlocks provide maximum safety for operators.

控制系統 Control System



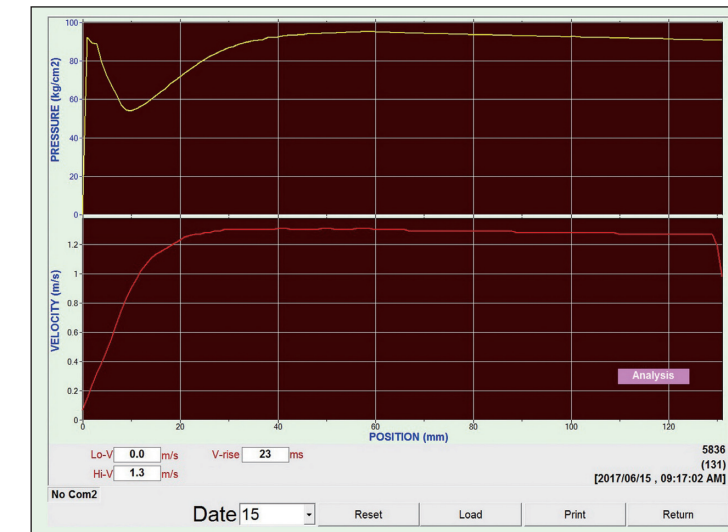
ZITAI Precision Machinery CO., LTD.



模具溫度及冷卻 DIE TEMPERATURE AND COOLING

在動定模上如有提供溫度監測點時，我們有提供動定模各2點溫度顯示，並可做上、下限的設定。在超過高溫時可強制通水冷卻，降至下限溫度時即關閉。

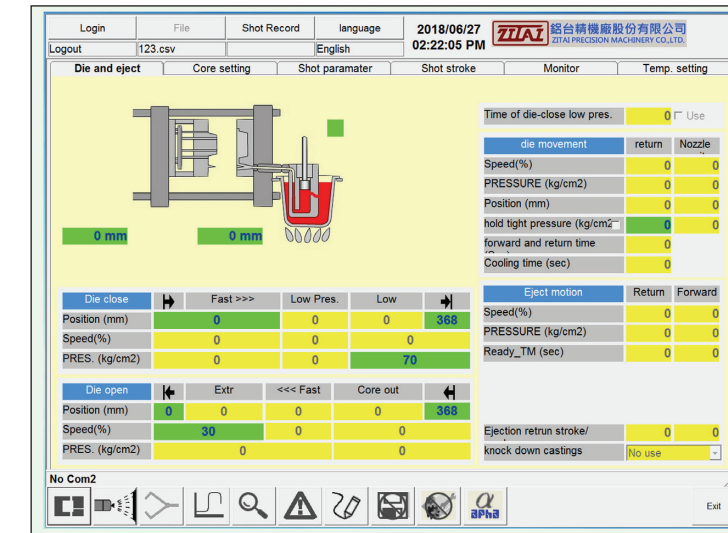
Dies equipped with temperature sensors can be connected to the die temperature control that calculates and distributes water based on set points and accurately maintain the optimal casting conditions.



射出監控系統 SHOT MONITORING SYSTEM

以曲線圖方式顯示壓射時壓力、速度位置變化狀態。

Pressure, velocity and position variations will be displayed by curve diagram.



人性化介面 HUMAN INTERFACE

所有參數設定以及數據顯示，皆透過電腦畫面呈現。

The human interface is designed to display the machine operational profile with all parameters shown and adjustable including injection, clamping, cores and ejection.